

SCHOOL OF SOCIAL SCIENCES

Enlightened, Versatile and Confident



SINGAPORE MANAGEMENT
UNIVERSITY



DEAN'S MESSAGE



We are living in a highly inter-connected and ever-fast digitalising world where traditional jobs had disappeared and unconventional jobs have emerged in the new economy.

To prepare our graduates for the challenges they will be facing in the new career landscape, a holistic university education that combines both theory and practice with academic rigour, as well as opportunities for experiential learning is necessary.

The School of Social Sciences (SOSS) offers you a unique and multi-disciplinary learning experience that will equip you with life-long learning skills and versatility to manage an ever-changing social and economic environment. The School offers two distinct specialised pathways in the Bachelor of Social Science Programme. The first pathway is a broad-based integrated curriculum on Political Science, Psychology and Sociology (PPS) that allows in-depth specialisation in each of the disciplines. The second pathway, in partnership with the Schools of Economics and Law, brings together the study of Politics, Law and Economics (PLE) with an integrative approach. Both pathways provide students with the ability to understand critical contemporary issues through interdisciplinary lenses.

We also have a team of distinguished and devoted faculty members who are outstanding researchers and educators that bring along their knowledge and professional experience into the classrooms. Coupled with small class sizes, students will have more opportunities to share meaningful interactions with their professors for personal, professional and intellectual growth.

I warmly welcome you to join the SOSS family.



Associate Professor Tan Yoo Guan
Interim Dean, School of Social Sciences



VALUE PROPOSITIONS

Established in 2007, the School of Social Sciences presents four unique value propositions that give our graduates an exceptional edge when they embark on their future careers.



Interdisciplinary Approach

We believe in a broad-based education that adopts multiple perspectives.

- The **first** interdisciplinary Social Science programme in Singapore.
- The **first** Politics, Law and Economics programme in Singapore.

see *Curriculum Overview* on **p. 3**



Experiential Learning

We help students gain real-world experiences and develop a global outlook.

- Students gain global exposure in exchanges, internships and community projects.
- Students will receive opportunities to work with industry partners and international organisations.

see *Student Life* on **p. 8**

School of Social Sciences (SOSS)



Distinguished and Devoted Faculty

We provide mentors that facilitate your intellectual and professional growth.

- SOSS faculty members are qualified experts in their respective fields.
- Small class size of not more than 45 students ensures engaging and meaningful interactions.



Multiple Career Pathways

We nurture versatile graduates with access to myriad career opportunities.

- Students are equipped with broad skills and a critical understanding of social issues.
- More than 90% of SOSS graduates attain employment within six months upon graduation.

see *Career Prospects* on **p. 10**

CURRICULUM OVERVIEW

The Bachelor of Social Science (BSocSc) programme offers a broad-based undergraduate education with two specialised pathways. Firstly, you may choose to major in one of three disciplines – **Political Science**, **Psychology** or **Sociology**.

Political Science studies important issues such as **human rights, organisation of power** and **terrorism**. Drawing from comparative politics, international relations, political theory and political economy, students analyse and interpret contemporary and historical events, and develop insights on how power is structured, contested and exercised.

Psychology is the scientific study of **observable behaviour** and **unobservable mental processes**. Psychological theories and research may be applied in business, education, public policy, and other settings. Major sub-disciplines include social, cognitive, biological and organisational psychology.

Sociology critically examines **societal trends and institutions** to make sense of the causes and conditions of change in culture, politics and the economy, with a particular focus on Asia. Students study the challenges of social inequality, migration and urbanisation, as well as the role of networks in social outcomes such as fads and fashions.

Alternatively, you may choose to major in **Politics, Law and Economics (PLE)**.

The **Politics, Law and Economics** major is designed to equip future leaders and thinkers with a deep understanding of **global politics and economics**, along with the **legal frameworks and contexts of their transformations**. Interdisciplinary courses hone strategic and analytical thinking skills, and empower students to seek innovative solutions to real-world problems.

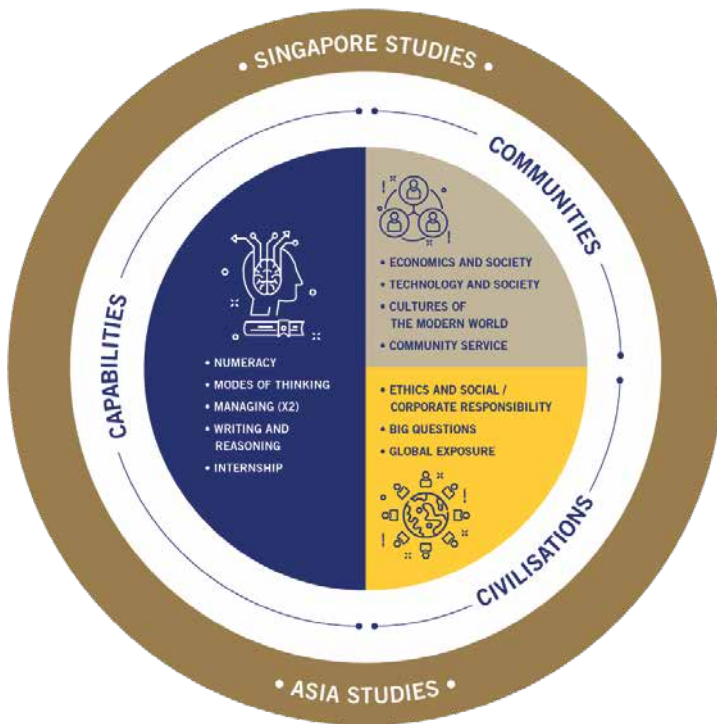
Bachelor of Social Science Programme Structure

	Political Science	Psychology	Sociology	Politics, Law and Economics
SMU Core	Capabilities 6 CUs, Communities 4 CUs Civilisations 2 CUs, Graduation Requirements*			
Major Core	6 CUs	8 CUs	8 CUs	12 CUs
Major Electives	9 CUs	7 CUs	7 CUs	5 CUs
Free Electives	9 CUs	9 CUs	9 CUs	7 CUs
Total	36 Course Units (CUs)			

*Students are required to fulfil a Singapore Studies requirement, an Asia Studies requirement and a Global Exposure experience, prior to graduation.

SMU CORE CURRICULUM

The SMU Core Curriculum is a menu of twelve carefully selected course units (CUs) to initiate undergraduates into their journey to become holistic SMU graduates. The Core Curriculum also serves as a means for students across all disciplines to bond through a common intellectual experience. It stands on three pillars of learning, or inter-related paths of development: Capabilities, Communities and Civilisations.



Capabilities



Students will also complete an internship, either locally or overseas.

Develop specific competencies and skills that are necessary to dexterously operate in an increasingly complex, digitised and data-driven working environment.

Communities



Students will also complete a community service project, either locally or overseas.

Promote understanding of the economic, technological, and cultural systems that structure our interactions with our communities.

Civilisations



Students will complete a Global Exposure Experience.

Engage in critical dialogue and problem solving through immersion into fundamental and perennial debates that cut across time and space:

- Happiness & Suffering
- Wealth & Poverty
- War & Peace
- Global & Local

Course Listing

Capabilities

Managing (2 CUs)

Choose from:

- Business, Government and Society
- Spreadsheet Modelling and Analytics
- Design Thinking
- Entrepreneurship and Value Creation
- Leadership and Team Building
- Management Communication

Modes of Thinking (1 CU)

Choose from:

- Computational Thinking
- Critical Thinking
- Decision Making
- Innovation and Creative Thinking
- Managing in a Volatile, Uncertain, Complex and Ambiguous Context

Numeracy (1 CU)

- Calculus (For PPS)
- Introductory Statistics (For PLE)

Writing and Reasoning (1 CU)

Programme in Writing and Reasoning

Internship (1 CU)

(min. 10 consecutive weeks)

Communities

Economics and Society (1 CU)

Technology and Society (1 CU)

Choose from:

- Artificial Intelligence and Society

- Digital Media in Society
- Science, Environment and Empire
- Technology and World Change

Cultures of the Modern World (1 CU)

Choose from:

- Arts and Humanities
 - Asian Histories
 - Film in Southeast Asia
 - Singapore Literature
- Societal and Civilisational Cultures
 - Cultures of Innovation
 - Family Business Cultures
 - Urban Cultures
- Foreign Languages

Community Service (1 CU)

(min. 80 hours)

Civilisations

Ethics and Social Responsibility (1 CU)

Big Questions (1 CU)

Global Exposure

Graduation Requirements

Singapore Studies

Asia Studies

Total

12 Course Units (CUs)

Note: Courses listed are not exhaustive and are subject to change from term to term.

POLITICAL SCIENCE, PSYCHOLOGY, SOCIOLOGY CURRICULUM

Political Science	Psychology	Sociology
<p>Major Core (6 CUs)</p> <ul style="list-style-type: none"> • Introduction to Politics and Policy Studies • Introduction to Psychology • Introductory Statistics • Social Science Practicum • Southeast Asia Past and Present • Understanding Societies 	<p>Major Core (8 CUs)</p> <ul style="list-style-type: none"> • Introduction to Politics and Policy Studies • Introduction to Psychology • Introductory Statistics • Psychology Research Methods I • Psychology Research Methods II • Social Science Practicum • Southeast Asia Past and Present • Understanding Societies 	<p>Major Core (8 CUs)</p> <ul style="list-style-type: none"> • Introduction to Politics and Policy Studies • Introduction to Psychology • Introduction to Sociological Theory • Introductory Statistics • Research Methods in Sociology and Political Science • Social Science Practicum • Southeast Asia Past and Present • Understanding Societies
<p>Major Electives (9 CUs)</p> <p>Choose from:</p> <ul style="list-style-type: none"> • Comparing Political Systems • Development, Underdevelopment and Poverty • Elections and the Media • European Union Politics • Global Political Economy • International Political Economy • International Relations of East Asia • Introduction to Public Policy • Political Economy of Development • Political Economy of East Asia • Political Science Study Mission • Political Theory • Politics and Society of India • Politics of China • Politics of Food Security • Politics of South East Asia • Politics of the Two Koreas • Research Methods in Sociology and Political Science • Security Studies • Senior Thesis in Political Issue • Special Topics in Political Issues • The Politics of Water in Asia • World Politics 	<p>Major Electives (7 CUs)</p> <p>Choose from:</p> <ul style="list-style-type: none"> • Abnormal Psychology • Cognitive Psychology • Cultural Psychology • Developmental Psychology • Evolutionary Psychology • Health Psychology • Industrial and Organisational Psychology • Psychology of Close Relationships • Psychology of Emotions • Psychology of Group Processes and Decision-Making • Psychology of Individual Differences • Psychology of Mating • Psychology of Motivation • Psychology of Reasoning and Thinking • Psychology Study Mission • Psychometrics and Psychological Testing • Senior Thesis in Psychology • Social Cognition • Social Psychology • Subjective Well-Being 	<p>Major Electives (7 CUs)</p> <p>Choose from:</p> <ul style="list-style-type: none"> • Contemporary South Asian Societies • Deconstructing Singapore Society • Gender and Family • Global and Transnational Sociology • Governance and Development in the Global South • Media and Society • Migration and Urbanisation • Nation-Building in Asia • Population and Society • Science, Technology and Public Policy • Senior Thesis in Sociology • Social Innovation: Tools for Social Changes • Social Networks • Social Problems in Asia • Social Stratification and Inequality • Sociological Theories of Crime and Deviance • Sociology of Economic Life • Sociology of Education • Sociology of Fads and Fashion • Sociology of Food • Sociology Study Mission • Sociology of Terrorism and Political Violence • Sociology of Work • Understanding China's Economic Miracle: Social Origins and Social Impact
Total	15 Course Units (CUs)	

Note: Courses listed are not exhaustive and are subject to change from term to term.

POLITICS, LAW AND ECONOMICS CURRICULUM

Politics, Law and Economics Core (12 CUs)

- Business Law
- Constitutional Law*
- Intermediate Mathematics for Economics
- Introduction to Political and Policy Studies
- Legal Theory and Philosophy
- Macroeconomics 1
- Microeconomics 1
- Political Theory
- Politics of South East Asia
- Research Methods in Sociology and Political Science
- Social Science Practicum
- Strategic Thinking

Politics, Law and Economics Electives (5 CUs)

Choose five courses from one of the following themes:

(A) Choice and Behaviour

- Advanced Microeconomics
- Economic Analysis of Law
- Elections and the Media
- Evolutionary Psychology
- Game Theory
- Law and Psychology
- Mass Media and Public Opinion Research
- Probability Theory and Applications
- Psychology of Group Processes and Decision making
- Psychology of Reasoning and Thinking
- Senior Thesis in Politics, Law and Economics
- Sociology of Terrorism and Political Violence
- The Economics of Politics

(B) Global Studies

- Asia and the World in the Twentieth Century
- Comparing Political Systems
- Contemporary South Asian Societies

- Development Economics
- Economic Development in Asia
- Economics of Globalisation
- Education Policy - A Global Perspective
- Evolution of Public Institutions: An Economic and Historical Analysis
- Foundations of ASEAN Law and Policy
- Global Issues and Institutions
- Global Migration and Human Security
- Global Political Economy
- International Economics B
- Introduction to Chinese History, Culture, Economics, Politics and the Law
- Political Economy of East Asia
- Political Economy of Globalisation
- Politics and Society of India
- Politics of the Two Koreas
- Public International Law
- Senior Thesis in Politics, Law and Economics
- Sociology of Terrorism and Political Violence
- The Politics of Water in Asia
- Understanding China's Economic Miracle
- World Politics
- WTO: Law and Policy

(C) Public Policy and Governance

- Comparing Political Systems
- Economics of Aging
- Education Policy - A Global Perspective
- Environmental Economics
- Environmental Politics and Policy
- Ethics and Public Policy
- Evolution of Public Institutions: An Economic and Historical Analysis
- Family and Society: Economic Theory with Practices
- Governance and Development in the Global South
- Health Economics
- Human Capital and Economics of Education
- Intermediate Macroeconomics II
- Intermediate Microeconomics II
- Introduction to Public Policy
- Labour Economics

- Law and Policy of Ethnic Relations in Singapore
- Law and Regulation
- Medical Law and Health Policy
- Monetary Economics
- Policy Design and Analysis
- Political Philosophy
- Politics, Philosophy, and Economics
- Public International Law
- Public Policy Taskforce
- Public Sector Economics
- Public Sector Management
- Senior Thesis in Politics, Law and Economics
- Sustainable Cities
- The Economics of Politics
- The Singapore Legal System
- Urban Economics and Policy

(D) Distribution and Justice

- Comparing Political Systems
- Conflict and Justice in International Relations
- Development, Underdevelopment and Poverty
- Economic Development in Asia
- Economic Growth
- Environmental Politics and Policy
- Gender Politics: Exclusion and Empowerment
- Global Political Economy
- Jurisprudence: Modern and Critical Theories of Law
- Macroeconomics of Income Distribution
- Political Philosophy
- Politics of Food Security
- Senior Thesis in Politics, Law and Economics
- Stratification and Inequality

Total 17 Course Units (CUs)

*Students intending to read a double degree in LLB or the SMU Juris Doctor (J.D.) Programme should replace this course with LAW204 Constitutional & Administrative Law (1.5 CUs).

Course Exemption for SMU Juris Doctor (J.D.) Programme

Politics, Law and Economics students admitted to the J.D. programme within three years of obtaining their bachelor's degree will be exempted up to five CUs of the J.D. degree if they have completed five SMU Law courses. LGST courses and other universities' courses do not qualify for exemption.

The grade point obtained for the exempted Law courses will be computed into the J.D. GPA. Students who have completed other SMU courses listed in the J.D. list of core courses (on top of the five exempted), will have to replace them with J.D. Law electives to meet the total of 20 CUs required for the J.D. degree.

Note: Courses listed are not exhaustive and are subject to change from term to term.

SECOND MAJORS



Arts and Culture Management (ACM)

This second major provides you with critical perspectives in arts and culture and knowledge in arts management that will aid you in entry into the arts and culture industry. The programme grooms the cosmopolitan manager who is at ease with cultural diversity and able to capitalise on new ideas in arts engagement. Faculty members partner with practice leaders to provide learning that will move beyond classrooms into the field.

Global Asia (GA)

This second major is an innovative programme that focuses on the forces, ideas and practices reshaping nations, businesses, institutions, individuals, and ways of life in an Asian world transformed by its global connections. It integrates knowledge from various fields including international relations, sociology, political science, economics, law, and cultural studies.

Asia is re-emerging as a major centre of economic dynamism and innovation. It also faces mounting problems related to inequality, poverty, environmental degradation, geopolitical tensions, and social and personal upheaval. The aim of this major is to generate a holistic understanding of how and why these changes are occurring, how states and people are responding, and what this means for countries and citizens in Asia and beyond.

Public Policy and Public Management (PPPM)

This second major is designed to provide you with a general foundation in the nature of public and non-profit workplaces and their political, psychological, and legal environments. It places a unique emphasis on the integration of academic study with real policy problems, further enhanced through the Public Policy Task Force Programme.

The Task Force is an important part of the curriculum and is designed to give you the opportunity to apply knowledge and skills acquired in the classroom to real-world problems. You will engage in collaborative, client-oriented, and problem-solving projects on critical public policy and management issues.

Students can also consider Political Science, Psychology or Sociology as their second major.

STUDENT LIFE

CT NAMASTE
moving mountains

Photo courtesy of Project Namaste XI
(Source: The SMU Blog)



Social Science Study Missions

These study missions cover a mixture of site visits, networking sessions and presentations by specialists and experts in various Social Science fields. They connect the students by uniting theory and practice through their discussion and practical fieldwork experience. Establishing valuable contacts and sometimes securing overseas internships or even full-time employment are bonus benefits of the programme.

As part of the Political Science Study Mission, students have visited rural China to learn about poverty and development in those areas. The Sociology Study Mission brought students to Guangzhou, China, where they attended various seminars and site visits to study the process of urbanisation in contemporary China. Students involved in the Psychology Student Mission had the opportunity to visit Tainan, where they visited various cultural-related sites and also attended workshops conducted by renowned entrepreneurs and scholars, which helped in their understanding of cross-cultural collaborations and creative thinking.

Internships

SMU internships benefits students in multiple ways - exposure to working life, developing real-world perspectives, gaining insights into career choices, and building valuable business networks.

Most students complete between two and six local or international internships, attesting to the value these experiences bring. Many of them are talent-spotted and offered jobs even before they graduate.

Summer Study Programme

This short-term, four-week programme allows students to study at a designated top university for a low fee. Through this, students get to enjoy a high-quality academic and cultural experience while living in a different country over the summer.

For this programme, our partners include Ateneo de Manila University (Philippines), University of St. Gallen (Switzerland) and Universitas Gadjah Mada (Indonesia).

Overseas Exchange

The overseas exchange offers a unique opportunity for students to gain invaluable exposure to different cultures, education systems and work practices. Undergraduates can choose to complete a term or a year of their degree overseas. Relevant modules completed will be credited towards their degree at SMU.

SMU has a rapidly growing network of partner universities, including University of Bath (United Kingdom), Carnegie Mellon University (United States), Fudan University (China), Seoul National University (South Korea), Tel Aviv University (Israel), Waseda University (Japan), and many more.

Overseas Community Involvement Projects

Overseas community service projects allow SMU students to make an impact in communities beyond their home ground. Students have been to countries such as Cambodia, China, Laos, Nepal, Thailand to help the underprivileged and disadvantaged.



Photo courtesy of Leonard Neo
(Source: The SMU Blog)



Photo courtesy of Perry Teo / SMU Samba Masala
(Source: The SMU Blog)

ALUMNI & STUDENTS TESTIMONIALS

//

The international exposure together with the broad-based curriculum broadened my world view, honed my analytical skills, and also allowed me to communicate across cultures better too. This is very critical and relevant to my current job, where I lead the advocacy work of the chamber representing the European business community to the Singapore government and the European Commission.

//



Elgin Seah

Bachelor of Social Science, Class of 2017,
Majored in Political Science

Public Affairs Manager
European Chamber of Commerce

//

The flexibility of SMU's curriculum has enabled me to hand-pick various sub-discipline courses of psychology which helped me to grow a keen interest in studying about mental disorders and how I can help others in society with what I learnt in school. This has also enabled me to stay relevant to what employers need. When I went for interviews prior to graduation, many employers were impressed by my resume because of the exposure that SMU has given me.

//



Joylynn Tan

Bachelor of Social Science, Class of 2015,
Majored in Psychology

Vocational Specialist
Institute of Mental Health

//

The wide variety of courses offered at SOSS kept me intellectually challenged. The weekly readings and reflection papers I had to do certainly helped to build up my capacity for work! I chose SMU as I wanted the flexibility of being able to choose a second major/degree, be it within SOSS or from other disciplines. Only SMU offers this kind of unrivalled ability of being able to "customise" the set of courses, which you would like to take.

//



Wan Shi Yun

Bachelor of Social Science and Business Management, Class of 2015,
Majored in Sociology and Operations Management

Account Manager
Wirecard

//

Entering into SMU School of Social Sciences has allowed me to grow as an individual in many different ways. Throughout my journey in SMU SOSS, I have received many opportunities, such as being a part of SMU Social Sciences Society (SOCIETY), SOSS Freshmen Orientation Camp, SMU Freshmen Orientation Camp, and SMU Floorball. I was also fortunate to gain overseas exposure through an Overseas Community Service Project in Laos as a student participant and Project Leader subsequently.

//



Simren Kumar

Bachelor of Social Science
Year 3, Major in Sociology

//

It has been an exhilarating journey in SOSS so far; the seminar-style classes in SMU are satisfyingly intellectually stimulating and often leave me craving for more mind-boggling concepts and applications. The multi-disciplinary curriculum and flexibility to pursue the courses continue to broaden my horizon and spark new ideas, yet anchor me to stay human-oriented.

//



Clement Lau

Bachelor in Social Science
Year 2, Major in Psychology and Marketing

//

The rigorous coursework and curriculum have challenged me, allowing me to develop a tenacity and determination to overcome the odds. At a deeper level, the course material has made me a more reflective individual.

//

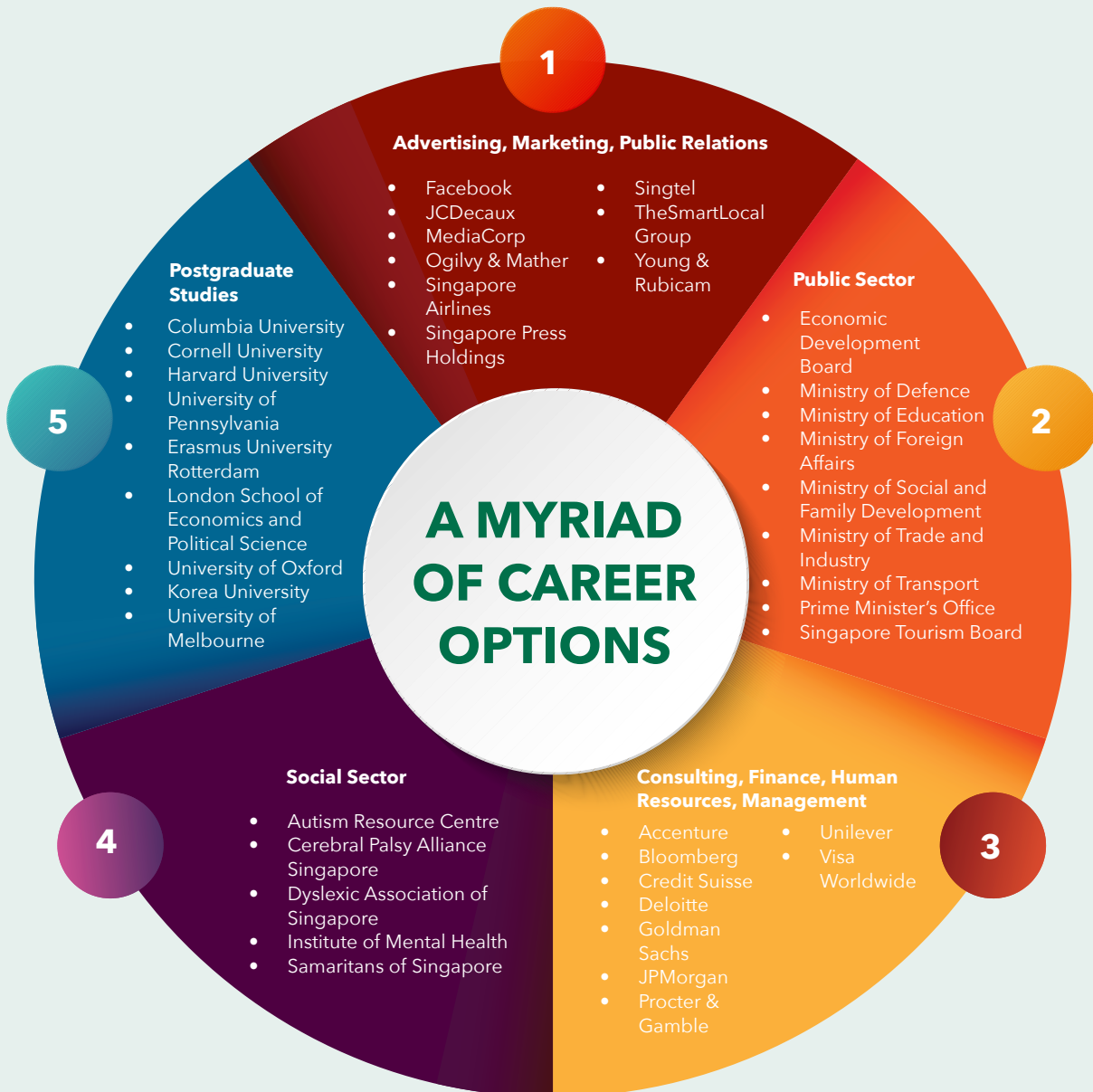


Eugene Tan

Bachelor in Social Science
Year 4,
Major in Political Science and Sociology



With a broad repertoire of skills and a critical understanding of social issues, SOSS graduates enjoy access to career opportunities in close to **30 industries** and gain admission into **top postgraduate programmes** around the world.



Note: The information listed above is correct at the time of printing.



SINGAPORE MANAGEMENT
UNIVERSITY

A Different U

Singapore Management University
School of Social Sciences

90 Stamford Road
Singapore 178903

Tel: (65) 6808 5152 Fax: (65) 6828 0423

website: www.socsc.smu.edu.sg

Enquiries: undergrad_socsc@smu.edu.sg

 [smusoss](https://www.facebook.com/smusoss)

 [sgsmu](https://twitter.com/sgsmu)

 [sgsmu](https://www.instagram.com/sgsmu)